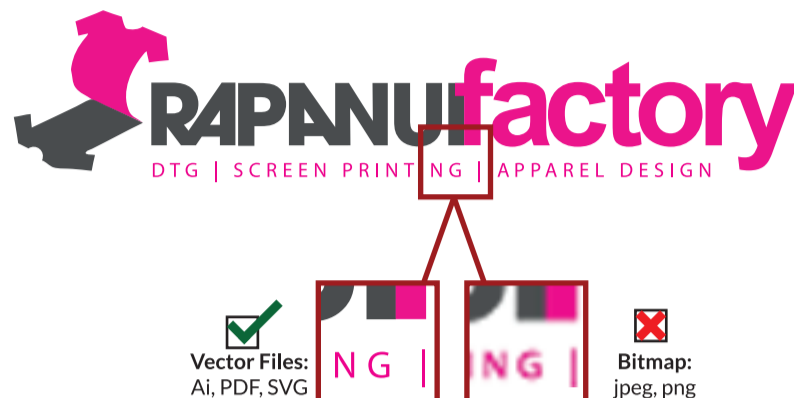




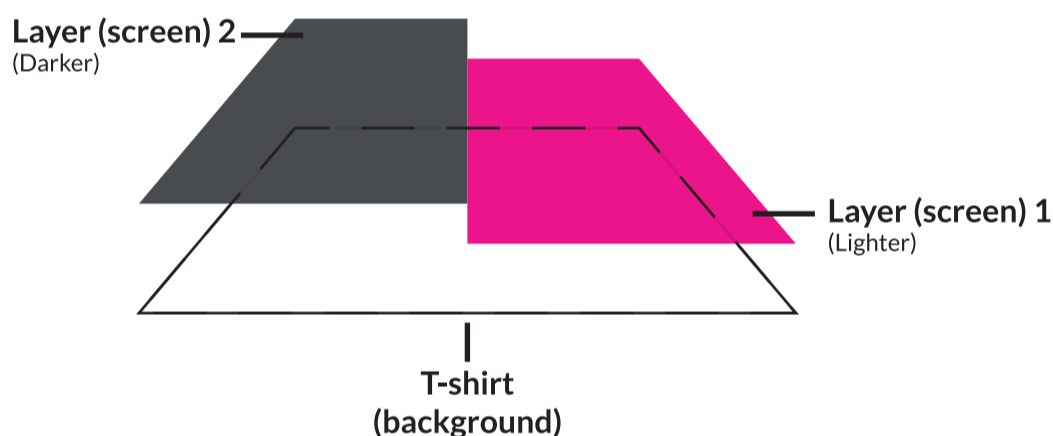
# Vectorised Artwork to Scale

To achieve the best quality and consistency we strongly recommend supplying artwork in vector format, saved in this template to scale.



## Layers:

Screen Printing is a process where each colour in the design is printed separately. It's good practise to save each colour in the design as a different layer, with the darkest at the front.



## Design Tips.

Screen printing is a very high quality, long lasting, professional way to print on garments. There are some tips you might want to consider.

### ■ ■ Use less screens (colours), Simplify applications

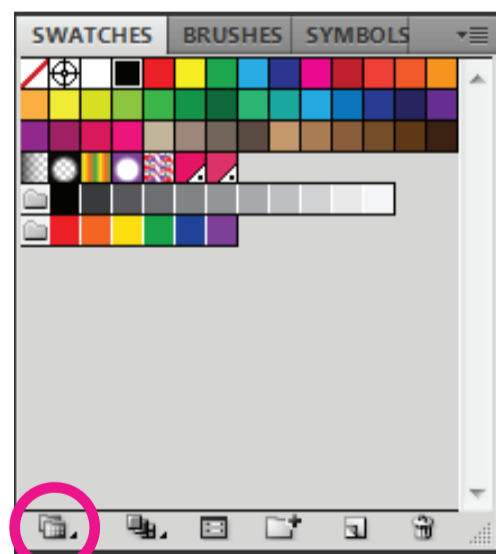
Do you really need a front, back, sleeve, neck and inside print in 12 colours? The most successful t-shirts in our history have been simple, bold chest prints. And at one colour application, also the most economical. Trust us, a one or two colour chest print is the right choice for 90% of applications.

### Watch out for small fonts & thin lines

Before you save up that design, remember that a hairline component in your design or one micron sized text probably won't resolve too well. Here's the minimum line thickness

### And here's the minimum text thickness.

Like anything in life, it's always good to avoid doing just the minimum: It's always best to get your lines and words big and bold for guaranteed impact. If you are using text, use right click > create outlines before you save (!!)



## Pantone Matching

Did you know we can match any pantone colour in your design for you?

### Selecting Pantones:

Drop Down Menu > Color Books > PANTONE Solid Coated > Select desired colour > Reference Pantone on correct artwork layer

## Saving Up Checklist

- Is your art vectorised?
- Is your art to scale?
- Have you "created outlines" from text / fonts?
- Is all spelling correct where words have been used?
- Have you separated the design, one-layer-per-colour?

Save as an illustrator PDF or .Ai file.

## Naming Convention

File>Save As> [Company Name]\_[Design Reference]\_[Front or Back]  
i.e. Rapanui Factory\_Logo\_Front.pdf

